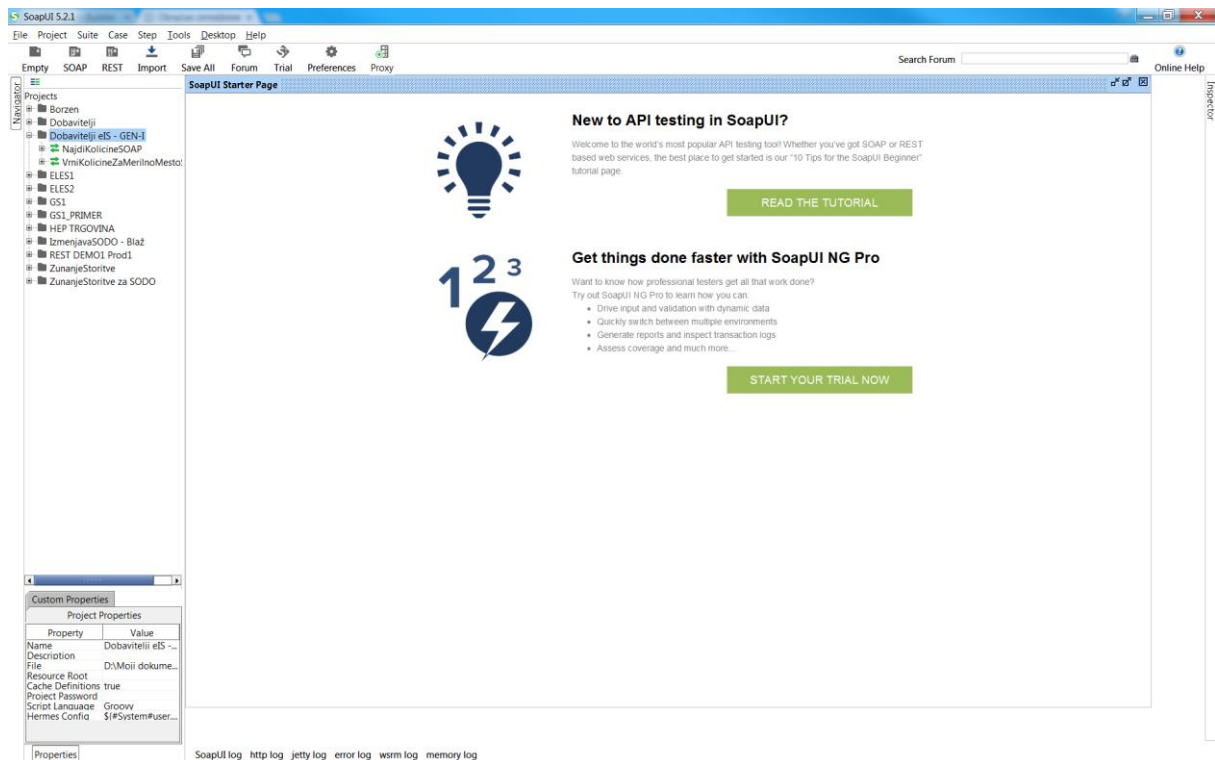
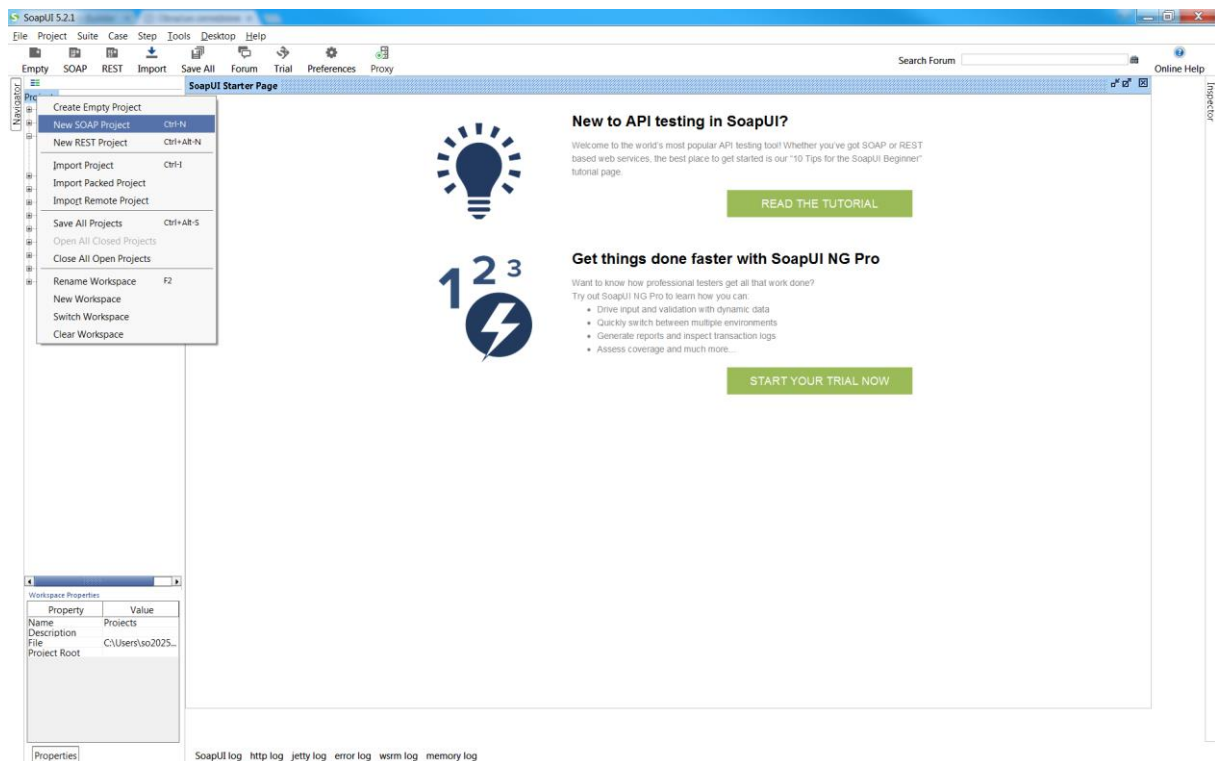
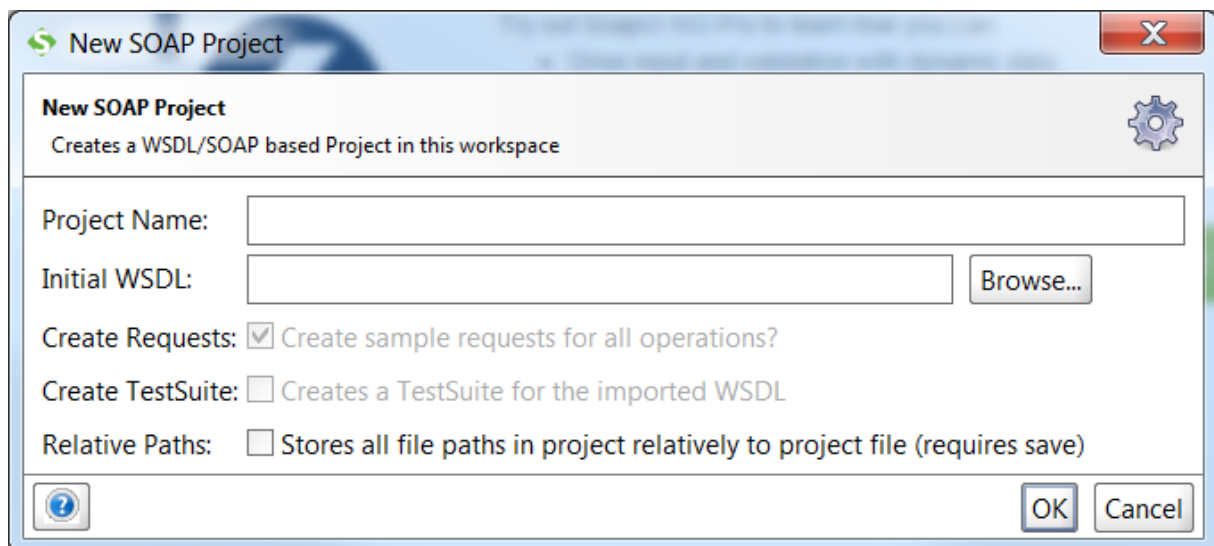


Navodilo za vnos novega projekta v SoapUI (verzija 5.2.1)



Izberemo Projects in z desnim klikom New SOAP Project





The image shows a 'New SOAP Project' dialog box. It has a title bar with a green icon and the text 'New SOAP Project'. Below the title bar is a header section with the text 'New SOAP Project' and 'Creates a WSDL/SOAP based Project in this workspace'. The main area contains several fields and checkboxes: 'Project Name:' with an empty text box, 'Initial WSDL:' with an empty text box and a 'Browse...' button, 'Create Requests:' with a checked checkbox and the text 'Create sample requests for all operations?', 'Create TestSuite:' with an unchecked checkbox and the text 'Creates a TestSuite for the imported WSDL', and 'Relative Paths:' with an unchecked checkbox and the text 'Stores all file paths in project relatively to project file (requires save)'. At the bottom right are 'OK' and 'Cancel' buttons. A help icon is at the bottom left.

New SOAP Project
Creates a WSDL/SOAP based Project in this workspace

Project Name:

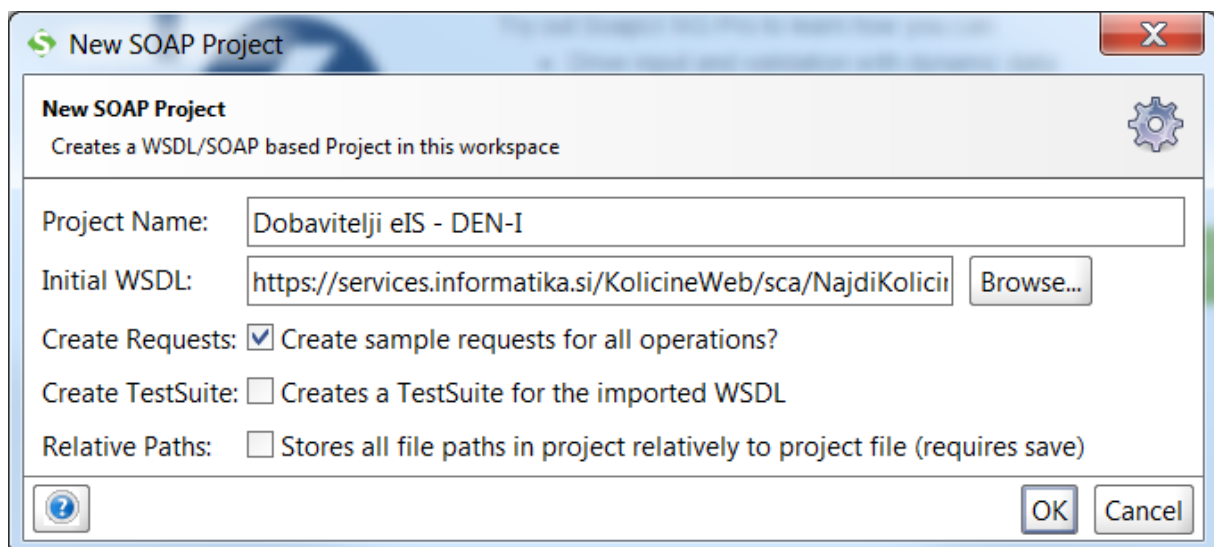
Initial WSDL:

Create Requests: ☒ Create sample requests for all operations?

Create TestSuite: ☐ Creates a TestSuite for the imported WSDL

Relative Paths: ☐ Stores all file paths in project relatively to project file (requires save)

Napolnimo Project Name s poljubnim imenom projekta ter vpišemo Initial WSDL, ki smo ga prejeli od ponudnika storitve



The image shows the same 'New SOAP Project' dialog box, but with the fields filled in. The 'Project Name' field contains 'Dobavitelji eIS - DEN-I'. The 'Initial WSDL' field contains 'https://services.informatika.si/KolicineWeb/sca/NajdiKolicini'. The 'Create Requests' checkbox is checked, and the 'Create TestSuite' checkbox is unchecked. The 'Relative Paths' checkbox is also unchecked. The 'OK' and 'Cancel' buttons are at the bottom right.

New SOAP Project
Creates a WSDL/SOAP based Project in this workspace

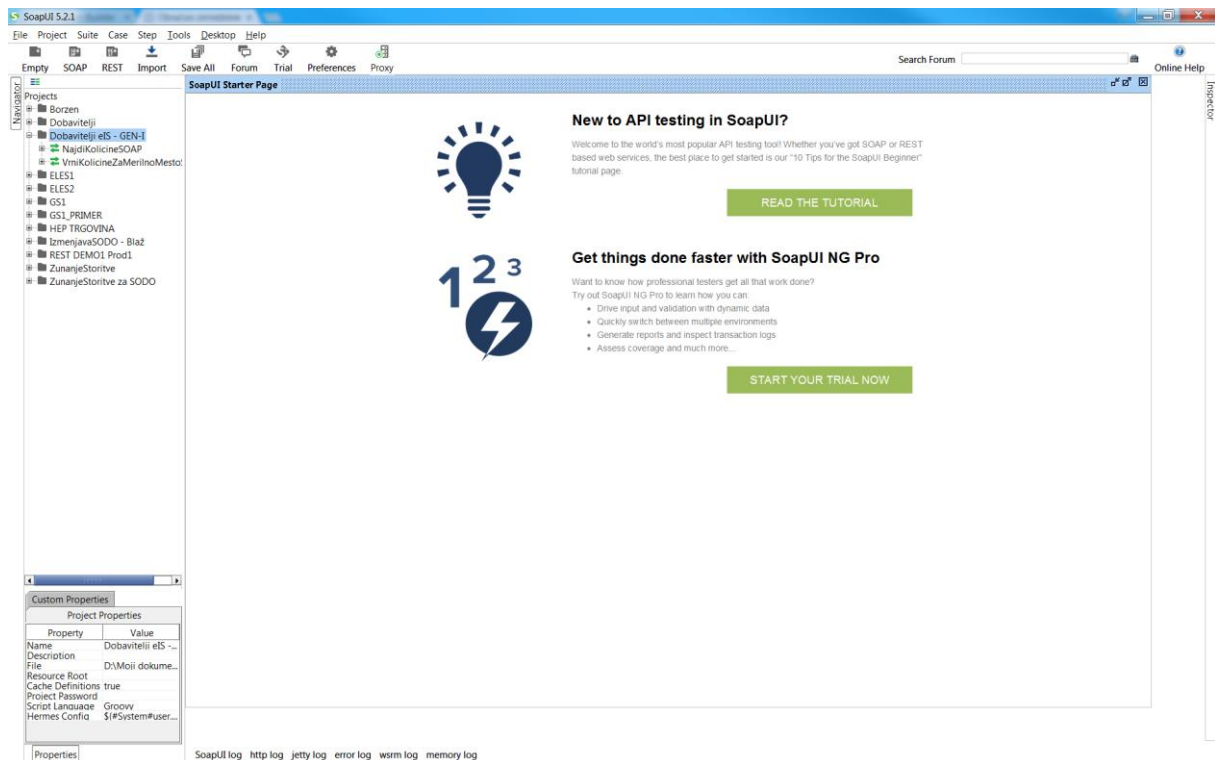
Project Name:

Initial WSDL:

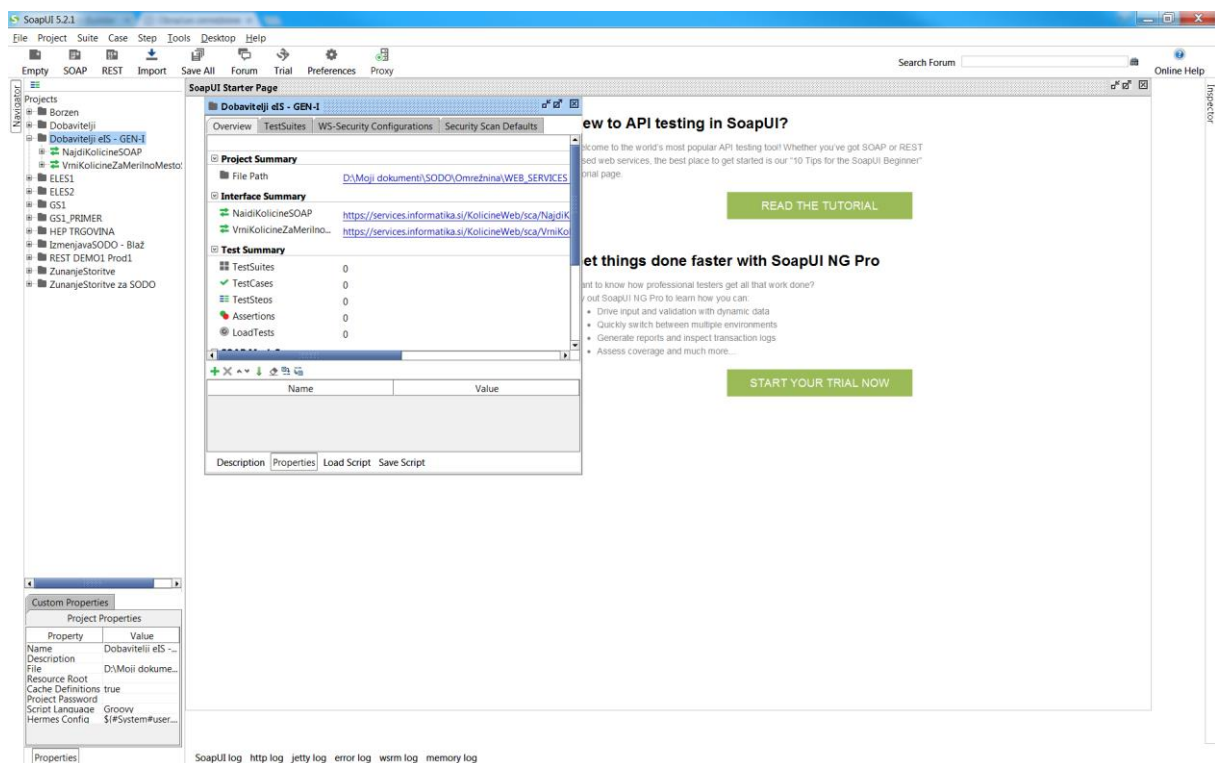
Create Requests: ☒ Create sample requests for all operations?

Create TestSuite: ☐ Creates a TestSuite for the imported WSDL

Relative Paths: ☐ Stores all file paths in project relatively to project file (requires save)

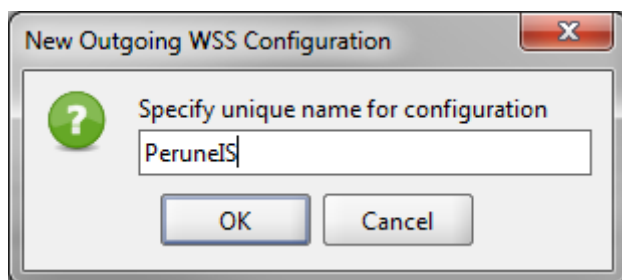


Dvokliknemo na ustvarjen project in odpre se okno za definiranje lastnosti projekta

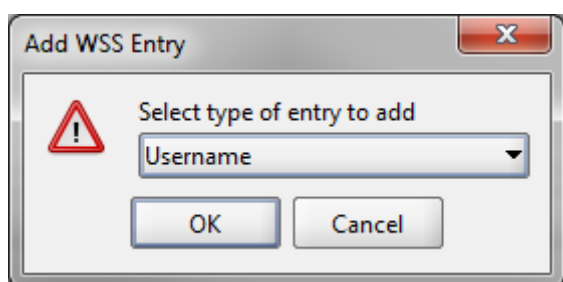


Izberemo zavihek WS-Security Configurations in izberemo Outgoing WS-Security Configurations

Kliknemo na + in vpišemo ime ponudnika

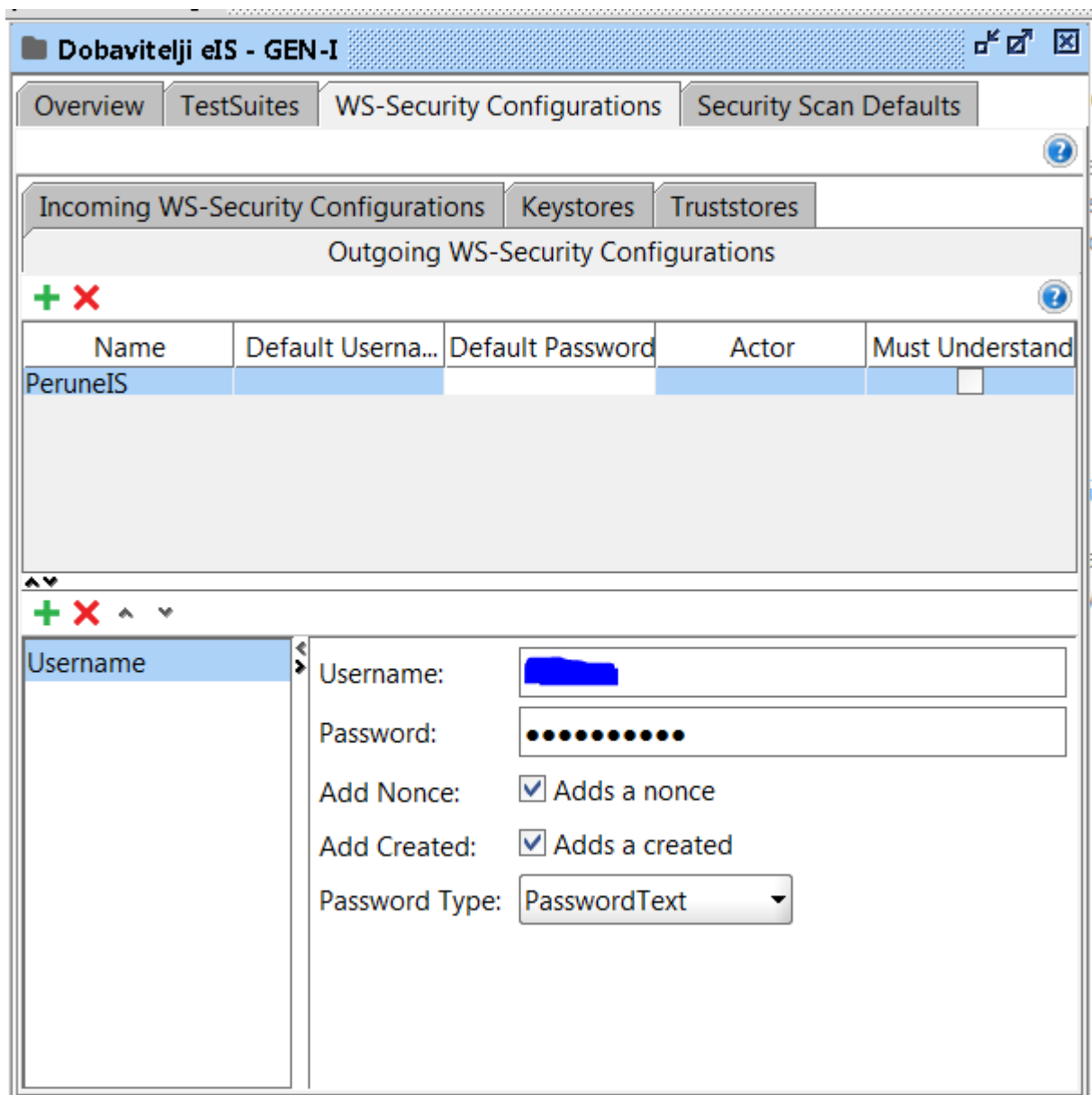


Izberemo spodnji + (Add WSS Entry)



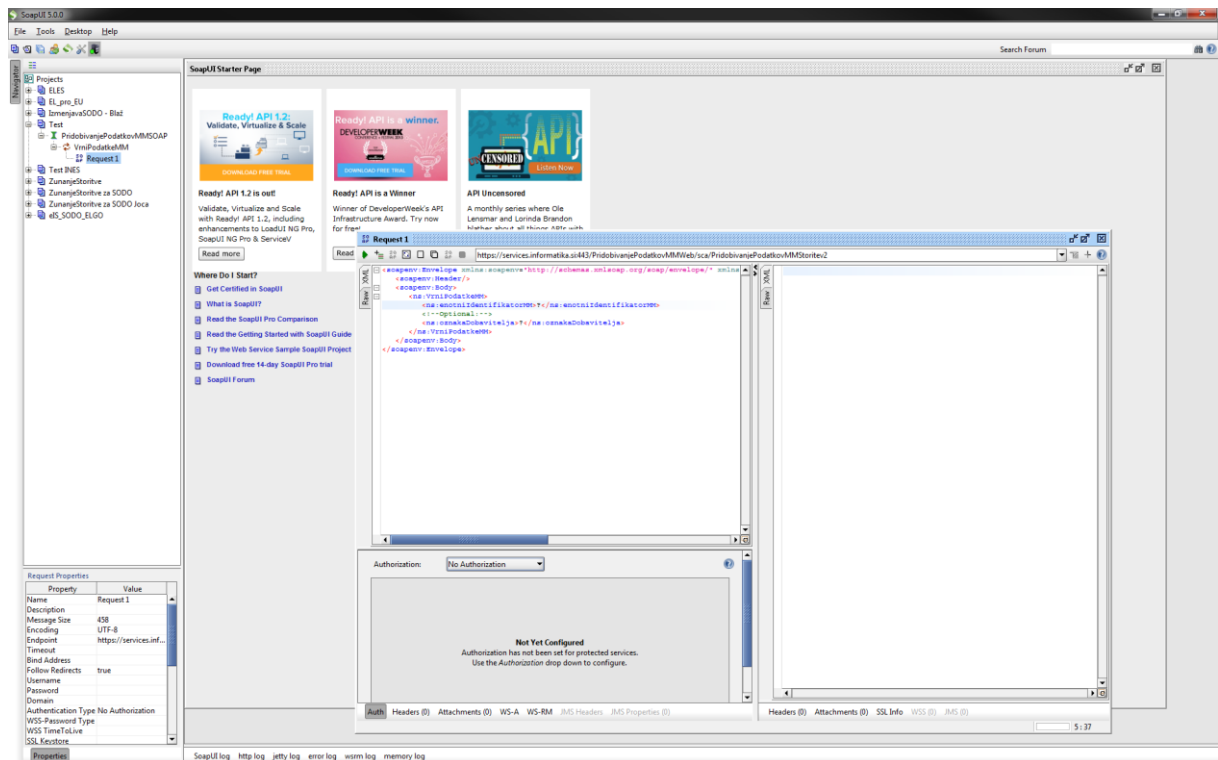
Izberemo Username in kliknemo OK.

Vpišemo uporabniško ime in geslo

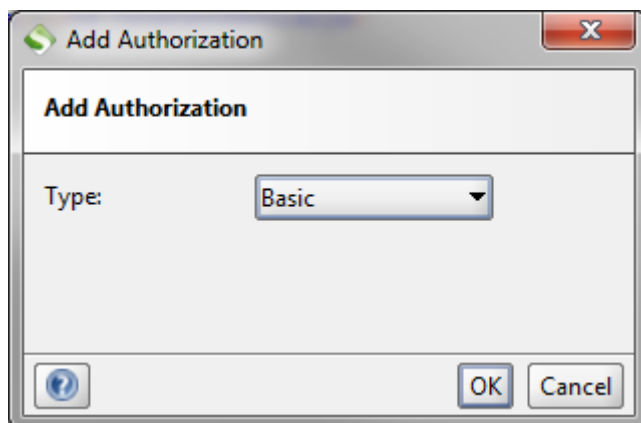


Zapremo okno.

Dvokliknemo na Request in kliknemo na Auth



Izberemo Add New Authorization in izberemo Basic



V outgoing WSS izberemo Ime ponudnika, ki smo ga vpisali (PeruneIS)

Request 1

https://services.informatika.si:443/KolicineWeb/sca/NaidiKolicineStoritev

Raw XML

```
<?xml version='1.0' encoding='UTF-8'>
<soapenv:Envelope xmlns:soapenv="http://schemas.xmlsoap.org/soap/envelope/" xmlns:ns="http://schemas.xmlsoap.org/soap/envelope/">
  <soapenv:Header/>
  <soapenv:Body>
    <ns:NajdiKolicineZahteva>
      <ns:datumOd>2016-08-01</ns:datumOd>
      <ns:datumDo>2016-08-10</ns:datumDo>
    </ns:NajdiKolicineZahteva>
  </soapenv:Body>
</soapenv:Envelope>
```

Authorization: Basic

Username:

Password:

Domain:

Pre-emptive auth: ☒ Use global preference ☐ Authenticate pre-emptively

Outgoing WSS:

Incoming WSS:

Auth (Basic) Headers (0) Attachments (0) WS-A WS-RM JMS Headers JMS Properties (0)

Raw XML

Headers (0) Attachments (0) SSL Info WSS (0) JMS (0)

1:1

Vpišemo vhodne parametre in preskusimo WS.

Request 1

https://services.informatika.si:443/KolicineWeb/sca/NaidiKolicineStoritev

Raw XML

```
<?xml version='1.0' encoding='UTF-8'>
<soapenv:Envelope xmlns:soapenv='http://schemas.xmlsoap.org/soap/envelope/'>
  <soapenv:Header/>
  <soapenv:Body>
    <ns:NajdiKolicineZahteva>
      <ns:datumOd>2016-10-06</ns:datumOd>
      <ns:datumDo>2016-10-06</ns:datumDo>
    </ns:NajdiKolicineZahteva>
  </soapenv:Body>
</soapenv:Envelope>
```

Raw XML

```
<?xml version='1.0' encoding='UTF-8'>
<soapenv:Envelope xmlns:soapenv='http://schemas.xmlsoap.org/soap/envelope/'>
  <soapenv:Body>
    <_1:NajdiKolicineOdgovor xmlns:_1='http://informatika.si/izmenjavaPodatkov/tro'>
      <_1:kolicine>
        <_1_1:enotniIdentifikatorMM>[REDACTED]</_1_1:enotniIdentifikatorMM>
        <_1_1:zadnjaLetnaKolicina>49032</_1_1:zadnjaLetnaKolicina>
        <_1_1:zadnjaAktualnaKolicina>48404</_1_1:zadnjaAktualnaKolicina>
        <_1_1:datumZadnjegaLetnegaPreracuna>2016-10-06</_1_1:datumZadnjegaLetneg>
        <_1_1:datumPreracunaZadnjeAktualneKolicine>2016-10-06</_1_1:datumPreracu>
      </_1:kolicine>
      <_1:kolicine>
        <_1_1:enotniIdentifikatorMM>[REDACTED]</_1_1:enotniIdentifikatorMM>
        <_1_1:zadnjaLetnaKolicina>7613</_1_1:zadnjaLetnaKolicina>
        <_1_1:zadnjaAktualnaKolicina>0</_1_1:zadnjaAktualnaKolicina>
        <_1_1:datumZadnjegaLetnegaPreracuna>2016-10-06</_1_1:datumZadnjegaLetneg>
        <_1_1:datumPreracunaZadnjeAktualneKolicine>2016-10-06</_1_1:datumPreracu>
      </_1:kolicine>
      <_1:kolicine>
        <_1_1:enotniIdentifikatorMM>[REDACTED]</_1_1:enotniIdentifikatorMM>
        <_1_1:zadnjaLetnaKolicina>0</_1_1:zadnjaLetnaKolicina>
        <_1_1:zadnjaAktualnaKolicina>0</_1_1:zadnjaAktualnaKolicina>
        <_1_1:datumZadnjegaLetnegaPreracuna>2016-10-06</_1_1:datumZadnjegaLetneg>
        <_1_1:datumPreracunaZadnjeAktualneKolicine>2016-10-06</_1_1:datumPreracu>
      </_1:kolicine>
      <_1:kolicine>
        <_1_1:enotniIdentifikatorMM>[REDACTED]</_1_1:enotniIdentifikatorMM>
        <_1_1:zadnjaLetnaKolicina>12090</_1_1:zadnjaLetnaKolicina>
        <_1_1:zadnjaAktualnaKolicina>11090</_1_1:zadnjaAktualnaKolicina>
        <_1_1:datumZadnjegaLetnegaPreracuna>2016-10-06</_1_1:datumZadnjegaLetneg>
        <_1_1:datumPreracunaZadnjeAktualneKolicine>2016-10-06</_1_1:datumPreracu>
      </_1:kolicine>
      <_1:kolicine>
        <_1_1:enotniIdentifikatorMM>[REDACTED]</_1_1:enotniIdentifikatorMM>
        <_1_1:zadnjaLetnaKolicina>33687</_1_1:zadnjaLetnaKolicina>
        <_1_1:zadnjaAktualnaKolicina>30048</_1_1:zadnjaAktualnaKolicina>
        <_1_1:datumZadnjegaLetnegaPreracuna>2016-10-06</_1_1:datumZadnjegaLetneg>
        <_1_1:datumPreracunaZadnjeAktualneKolicine>2016-10-06</_1_1:datumPreracu>
      </_1:kolicine>
      <_1:kolicine>
        <_1_1:enotniIdentifikatorMM>[REDACTED]</_1_1:enotniIdentifikatorMM>
        <_1_1:zadnjaLetnaKolicina>0</_1_1:zadnjaLetnaKolicina>
        <_1_1:zadnjaAktualnaKolicina>0</_1_1:zadnjaAktualnaKolicina>
        <_1_1:datumZadnjegaLetnegaPreracuna>2016-10-06</_1_1:datumZadnjegaLetneg>
        <_1_1:datumPreracunaZadnjeAktualneKolicine>2016-10-06</_1_1:datumPreracu>
      </_1:kolicine>
      <_1_1:enotniIdentifikatorMM>[REDACTED]</_1_1:enotniIdentifikatorMM>
    </_1:NajdiKolicineOdgovor>
  </soapenv:Body>
</soapenv:Envelope>
```

Auth (...) Header... Attachmen... W... WS-... JMS He... JMS Proper...

response time: 12013ms (9114482 bytes)

Headers (11) Attachments (0) SSL Info (1 certs) WSS (0) JMS (0)

1:1